

Allsvenska_Div_1_2 Kval 2024



Oil Pattern Distance: **40 Feet**
 Forward Oil Total: **14.45 mL**
 Forward Boards Crossed: **289 Boards**

Reverse Brush Drop: **40 Feet**
 Reverse Oil Total: **10 mL**
 Reverse Boards Crossed: **200 Boards**

Oil Per Board: **50 uL**
 Volume Oil Total: **24.45 mL**
 Total Boards Crossed: **489 Boards**

	Start	Stop	Loads	Speed	Crossed	Start	End	Feet	T.Oil
1	3L	3R	1	14	35	0.0	0.0	0.0	1750
2	5L	5R	2	14	62	0.0	3.9	3.9	3100
3	6L	6R	2	18	58	3.9	9.0	5.1	2900
4	8L	8R	2	22	50	9.0	15.2	6.2	2500
5	9L	9R	2	26	46	15.2	22.5	7.3	2300
6	11L	11R	2	26	38	22.5	29.8	7.3	1900
7	2L	2R	0	26	0	29.8	40.0	10.2	0

Conditioner:
Type In or Select One

TransferType:
Type In or Select One

Forward
Reverse
More

	Start	Stop	Loads	Speed	Crossed	Start	End	Feet	T.Oil
1	2L	2R	0	30	0	40.0	31.0	-9.0	0
2	11L	11R	2	26	38	31.0	23.7	-7.3	1900
3	9L	9R	2	26	46	23.7	16.4	-7.3	2300
4	7L	7R	2	22	54	16.4	10.2	-6.2	2700
5	5L	5R	2	14	62	10.2	6.3	-3.9	3100
6	2L	2R	0	10	0	6.3	0.0	-6.3	0

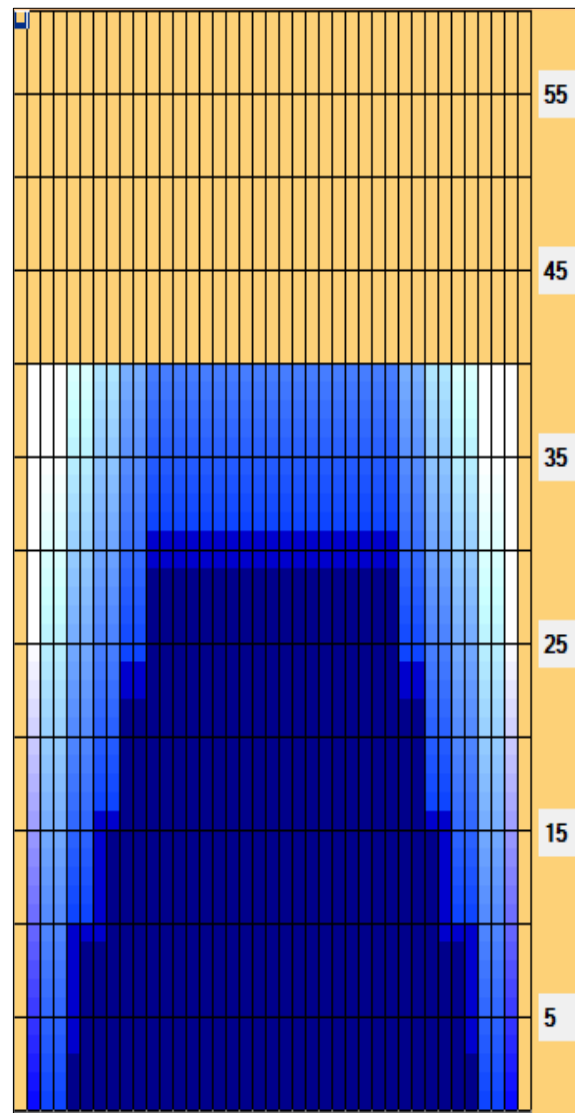
Forward
Reverse
More

Forward

Reverse

Combined

Buff



Item	3L-7L:18L-18R	8L-12L:18L-18R	13L-17L:18L-18R	18L-18R:17R-13R	18L-18R:12R-8R	18L-18R:7R-3R
Description	Outside Track:Middle	Middle Track:Middle	Inside Track:Middle	Middle: Inside Track	Middle:Middle Track	Middle:Outside Track
Track Zone Ratio	4.13	1.2	1	1	1.2	4.13

